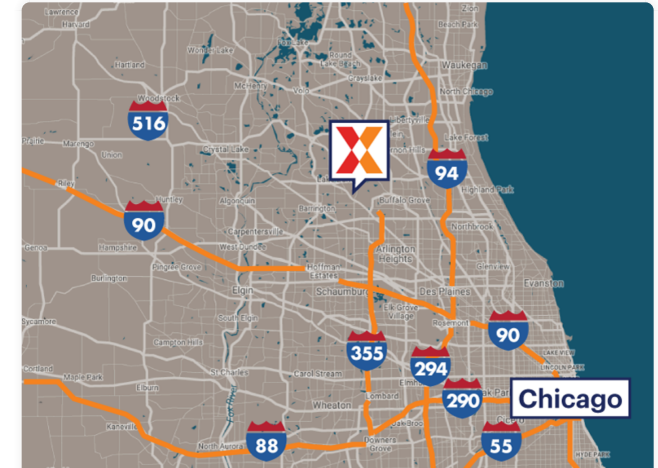
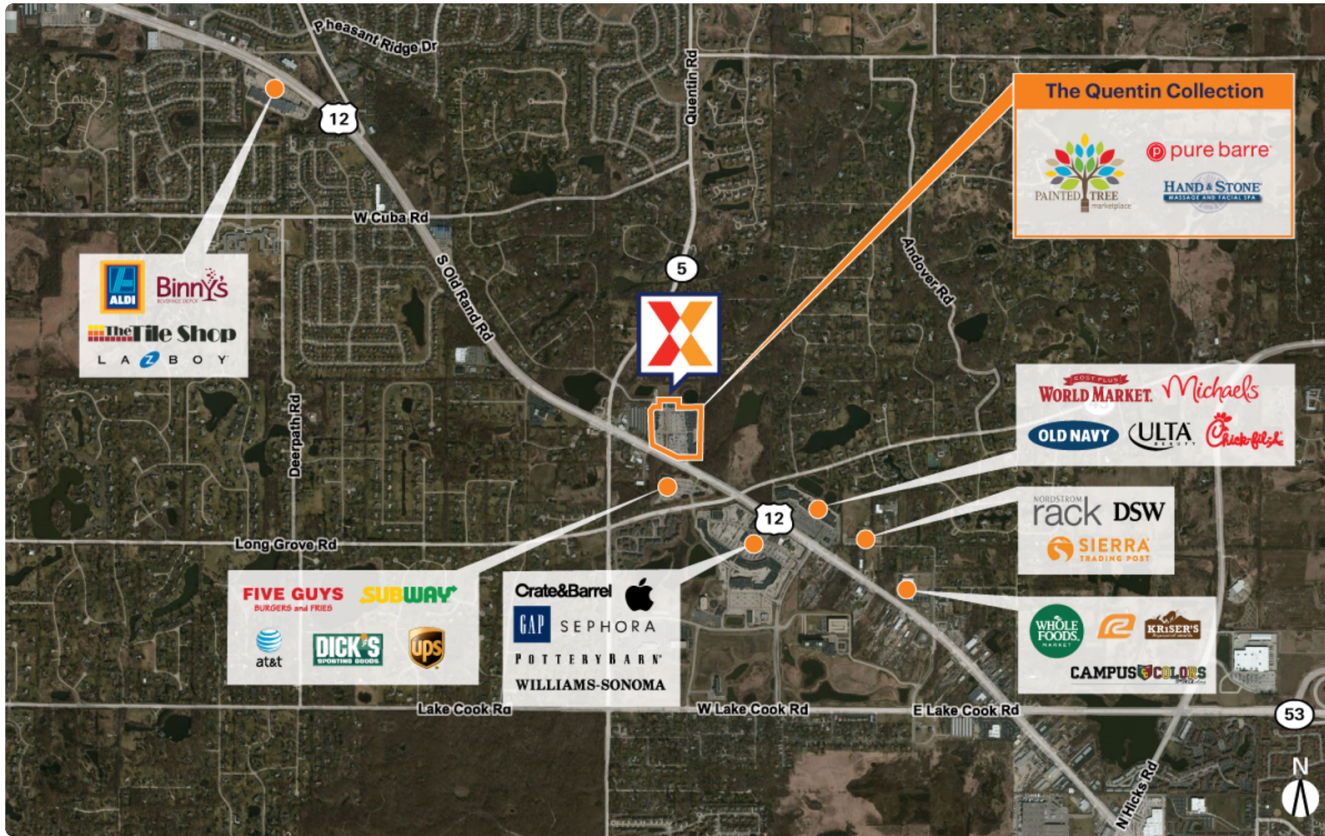


The Quentin Collection

20771 N. Rand Road | Kildeer, IL 60047

Lake County Chicago-Naperville-Elgin, IL-IN 176,835 Sq Ft

42.1664, -88.0588



Demographics	1 Mile	3 Miles	5 Miles
Population	5,197	59,610	173,440
Daytime Pop.	3,173	44,752	160,816
Households	1,765	22,126	65,671
Income	\$235,881	\$168,456	\$179,425

Source: Synergos Technologies, Inc. 2024

Benefit from a strong mix of national and local tenants, including Painted Tree Marketplace, Lava Island, Wu's House, X Golf, and Hand & Stone Massage and Facial Spa

Affluent and highly educated population, with an average household income of \$168K+ and 55% college-educated within a 3-mile radius

Prime location in Kildeer's main retail thoroughfare, with high visibility from 47K+ vehicles daily on Rand Rd and 18K+ on N Quentin Rd (Kalibrate 2023, 2025)



The Quentin Collection

20771 N. Rand Road | Kildeer, IL 60047

Lake County Chicago-Naperville-Elgin, IL-IN 176,835 Sq Ft

42.1664, -88.0588



Available Spaces

04	2,000 Sq Ft	360°	11A	6,010 Sq Ft	360°
06	1,609 Sq Ft	360°	13	36,526 Sq Ft	
07	2,323 Sq Ft	360°	14	20,087 Sq Ft	360°
08	2,200 Sq Ft		15	4,788 Sq Ft	
09	3,105 Sq Ft				

Current Tenants Space size listed in square feet

01	Wu's House	21,032
02	Hand & Stone Massage and Facial Spa	3,219
03	Prime IV Hydration & Wellness	2,050
05	LUXE Wearhouse	1,528
10	Sage Elite	6,471
11	Bear Paddle	11,136
12	Sims-Lohman	2,215
16	Quality Eye Care Clinic	2,296
17	CJFramer	2,132
18	Pure Barre	1,459
20A	X Golf	8,592
21	Lava Island	30,480
K1	Guanajuato	2,315
K2	Stretch Zone	1,524
K3	Kyva Han Coffee and Tea Compan	1,738

This site plan is for illustrative and information purposes only, showing the general layout of the shopping center; and is not a legal survey. Brixmor makes no representation or warranty that the shopping center is exactly as depicted as site conditions and tenant mix are subject to change over time.
1867

